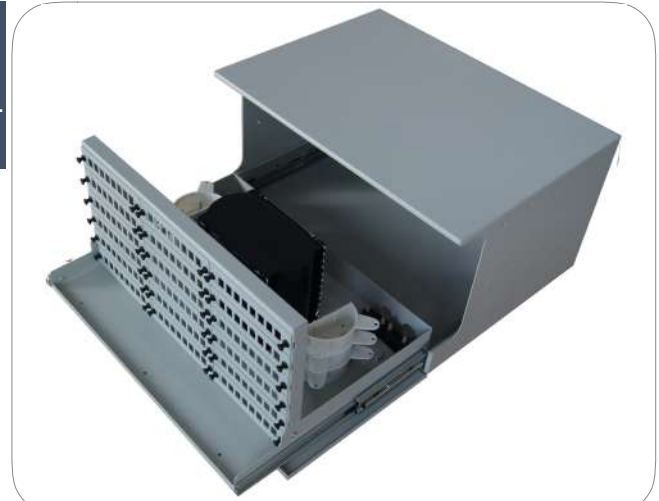


FIBER OPTIC SLIDING RS3 PATCH PANEL

The RS3 fiber optic patch panel is designed and manufactured under the telecommunication standards. It is a basic, flexible, light and suitable solution for your installation. Suitable for 19" or 23" standard optic distribution cabinets.



Material	Cold rolled steel
Width (mm)	482
Depth (mm)	232
High (mm)	328
Capacity	Up to 288 fibers with LC duplex adapters (144 SC simplex)
Weight (kg)	9.5
Operating Temperature (°C)	-40°C ~ +55°C
Accessories	12 splice trays 18 adapter plates (8 adapters SC SX) Metal front cover

ORDERING INFORMATION

Model	Adapter	Polishing	Type	Colors	Ports	Fiber	Length (m)
RS3	FC	A APC	D Duplex	1 Aqua	1	OS1 G.652B	1
	E2000	U UPC	Q Quad	2 Blue	2	OS2 G.652D	2
	LC		S Simplex	3 Beige	3	655 G.655	3
	MU			4 Green	657 G.657	
	SC			5 12 colors	7	OM1 62.5/125	
	ST					8	OM2 50/125 OM3 50/125 OM4 50/125

ORDERING INFORMATION EXAMPLE

RS3	LC	U	D	5	6	OS2	1
-----	----	---	---	---	---	-----	---

Configuration: Fiber Optic Sliding Patch Panel LC UPC 24 DX 48 Colors OS2 1mts pigtails