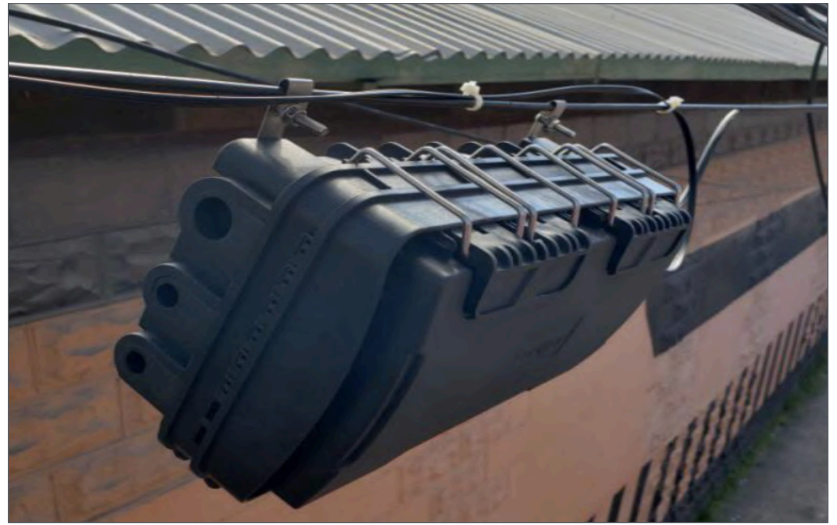


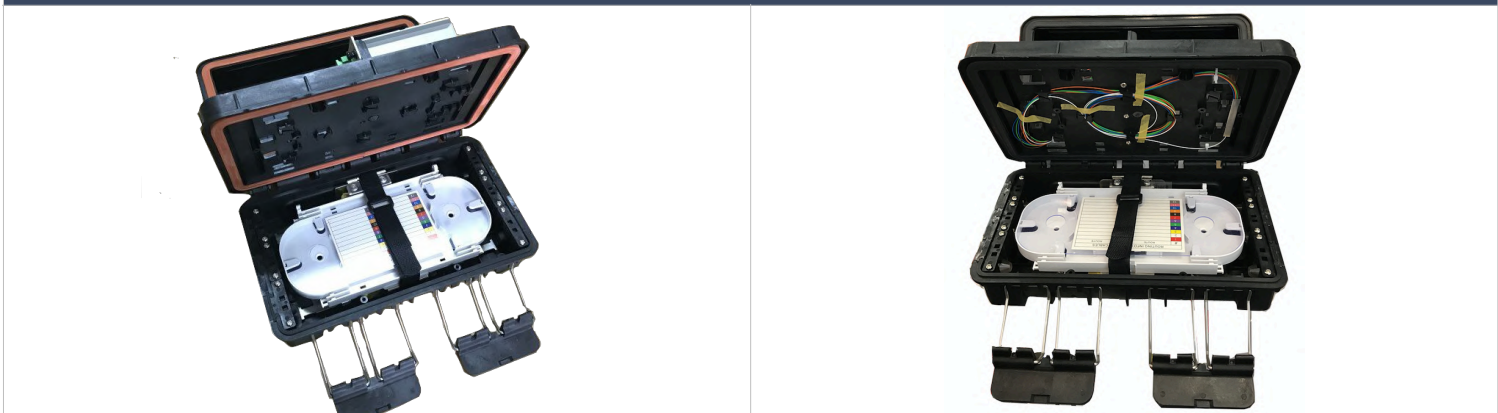
FIBER OPTIC ENCLOSURE MODEL IMG

It applies to any sort of cables (loose tube, skeleton, ribbon) and is available for usage of various connections (distribute bridging, divergence) in multiple environments (aerial, bracket, pipe-lined, hand hole, manhole).



	IMK
Dimensions (mm)	290*190*110
Max. Fiber Capacity	96
Cable entries (mm)	4* max. Φ 10 / 2* max. Φ 18
Material	PP + Glass fiber
Type of seal	Silicone Rubber
IP Rated	IP65
Installation Methods	Aerial
Operating Temperature (°C)	-40°C ~ +60°C

Pictures



ORDERING INFORMATION

Model	Accessories	
IMGA	A	Splitter
IMGB	B	Pigtails