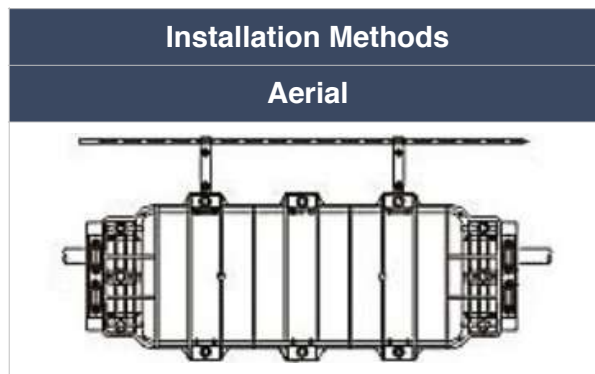


FIBER OPTIC ENCLOSURE MODEL IMS

It applies to any sort of cables (loose tube, skeleton, ribbon) and is available for usage of various connections (distribute bridging, divergence) in multiple environments (aerial, bracket, pipe-lined, hand hole, manhole).



Protection grade	IP55
Material	Modified polymer plastic
Seal Material	Foam Strip
Dimensions (mm)	668*160*95
Type of seal	Mechanical
Weight (kg)	2.5 ~ 3
Cable entries (mm)	4 * Φ 10 ~ 16
Lateral pressure-resistance	\geq 2000N / 10cm
Operating Temperature (°C)	-40°C ~ +60°C



ORDERING INFORMATION

Model	Fiber quantity
IMS	8
	16

Accessories			
Nr.	Commodity	Qty	Usage
1	Nylon ties (3*120)	12	Fix loose tube (nos.)
2	Protection sleeves (1.0*60mm)	24	Protect fiber splice point (nos.)
3	Spiral tube	1	Protect fiber (Nr.)
4	Insulation tape	1	Help cable port sealing (roll)
5	EVA tape	1	Protect fiber (Nr.)
6	Desiccant	1	Mosture proof (bag)
7	Un vulcanized sealing strip	1	Sealing box (piece)

Operation Manual

1. Separation of closure



First use screw driver to open the bolts. (The bolts in the picture could be changed to be bolts.)

2. Open the second layer



Use the screw driver to open the 4 bolts, to second layer

3. Take out the splitter box and all accessories



4. Splitter box installation of splitter and box



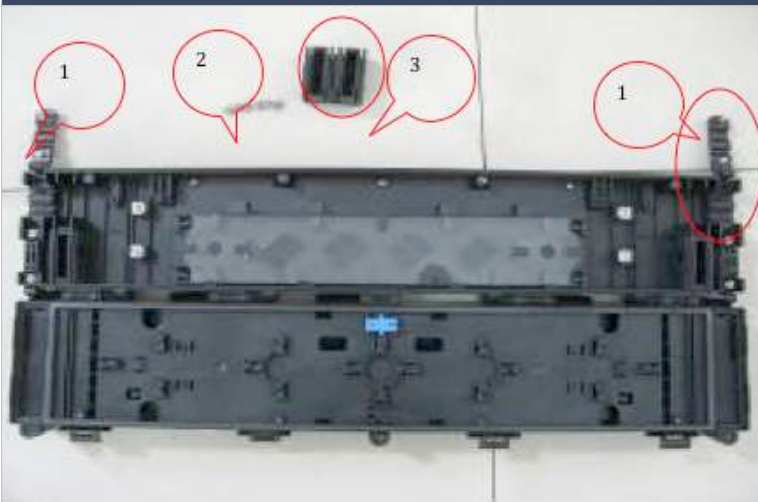
The splitter box could install 2 nos. of 1X8 splitter, 1:8 PLC steel tube type, mini type, 0.9mm, 1 input pigtail length 0.85m, 8 output pigtail length is between 0.5m and 0.85m, Size 4*7* length above 46mm
Please output the one splitter end from the box bottom.

5. Main cable marking, stripping and cleaning



- As per length requirement, mark on the length on cable
 - Use the knife to separate cable & messenger. The separation length should not less than 930mm, longer will be easy to installation.
 - Use special tools to separate cable outer sheath and loose tube. Both ends cut 50mm steel core if cable stripping from the cable stripping point.
 - Pull out the fiber, storage the fiber in the spiral tube.
- Be noted: Be careful to avoid the fiber broken.
Please do not use the broken fiber.

6. Take out parties of the second layer



1. Cable hasp, 2. Strength member, 3. Sealing block

7. Cut the sealing block



8. Install the cable



9. Insert the sealing block



10. Place the big hole



11. Fix the strength member



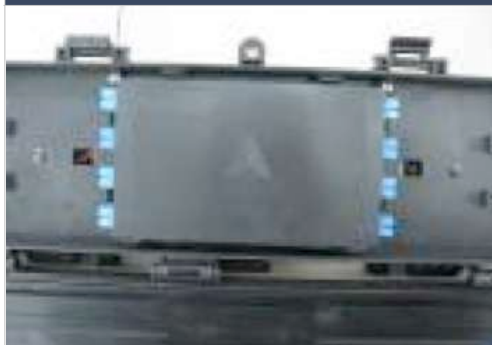
12. Fix the pressure block



13. Insert the sealing tape



14. Install the Splitter



Install the splitter cassette with splitter and adaptor pre-installed to the previously fixing place. The splitter input connector is outlet to the first layer and connector to the adaptor SC.

15. Complete the installation on the second layer, and locked it



Place the desiccant in the second layer, then using the driver to close screw down the bolts to lock it.

16a. Install the drop cable



Please make a fast connector on the drop cable and connector to the adaptor

16b. Install the drop cable



Then insert the drop cable to the fixing groove each closure ends

17. Close the first layer



Using the driver to screw down the bolts, and then lock the pressure buckle

18. Guild the drop cable



Pass the drop cable to the guild rings and fix them using nylon ties

Thank you for using our products. Once you have any questions during operation, please do not hesitate to contact us.