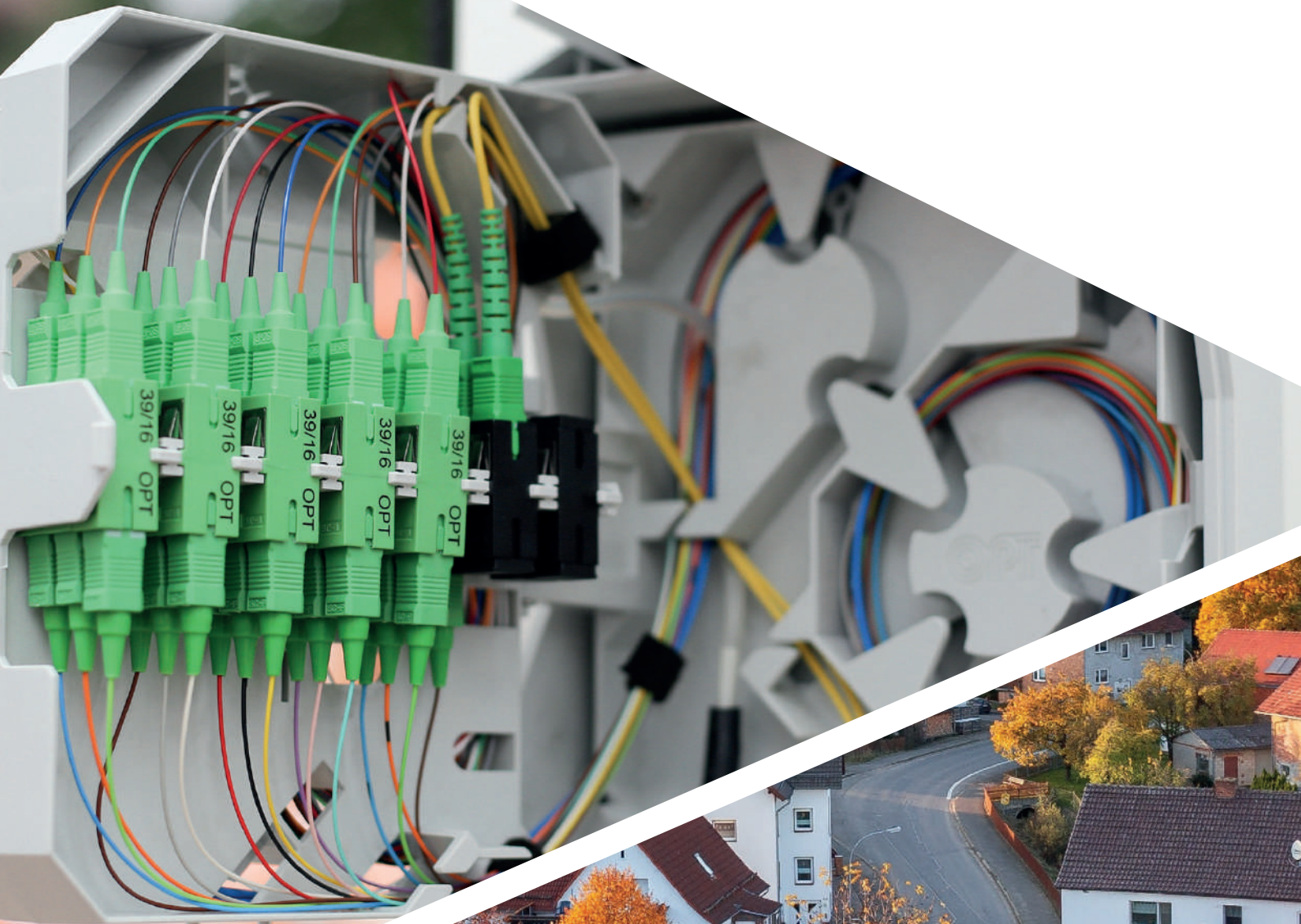




**Romatecsans**  
Your reliable supplier in Asia

# FTTX CATALOG



# INDEX

<b>Field connectors</b>	<b>2</b>
<b>Indoor boxes</b>	<b>3</b>
<b>Outdoor boxes</b>	<b>4 - 5</b>
<b>Splitters &amp; mechanical splices</b>	<b>6</b>
<b>Dome &amp; Inline enclosures</b>	<b>7 - 8</b>
<b>CTO boxes</b>	<b>9</b>
<b>Drop with connector</b>	<b>10</b>
<b>Cables / pre-terminated cables</b>	<b>11 - 13</b>
<b>Splice &amp; measurement Cleaning &amp; tools</b>	<b>14 - 15</b>
<b>Cleaning &amp; tools</b>	<b>16</b>
<b>Micro ducts</b>	<b>17</b>



## CERTIFICATIONS & STANDARDS

ZONE 4 GR-63-CORE

IP Rating



Seismic standard

Water & Dust  
resistance

UL Materials



Green packing

ISO 9001:2015

European certification

TIA/EIA/ANSI/IEEE  
ISO/IEC



Telecommunication  
standards

FOA

ITU

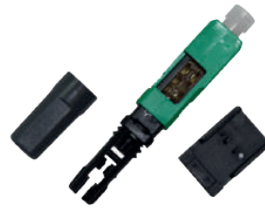


# FIELD CONNECTORS



## FIC SC APC Universal

Size	55mm
Insertion Loss	Typical 0.3dB / Max. 0.5dB
Durability	500 connections
Cable diameter	Universal round and flat (250um, 900um, 2mm and 3mm)



## FIC SC APC Model U. small

Size	49.75mm
Insertion Loss	Typical 0.3dB / Max. 0.5dB
Durability	500 connections
Cable diameter	Universal round and flat (250um, 900um, 2mm and 3mm)



## FIC SC APC Model CH

Size	56mm
Insertion Loss	Typical 0.3dB / Max. 0.5dB
Durability	500 connections
Cable diameter	Round and flat (2mm and 3mm)



## FIC SC APC Model CH2

Size	53.5mm
Insertion Loss	Typical 0.3dB / Max. 0.5dB
Durability	500 connections
Cable diameter	Round and flat (2mm and 3mm)

## OTHER MODELS



LC APC 2 & 3mm



ST 2 & 3mm



SC 2 & 3mm Model CH3



FC 2 & 3mm

# INDOOR TERMINAL BOXES



## Model 1EUTB

Size	86*86*27mm
Material	ABS
Capacity	2* SC SX
Installation	Wall



## Model 8EUTB

Size	85*115*12mm
Material	High impact polystyrene
Capacity	2* SC SX
Installation	Wall



## Model 4EUTB

Size	265*155*45mm
Material	Cold rolled steel
Capacity	8* SC SX
Installation	Wall



## Model 10EUTB

Size	140*130*36mm
Material	Cold rolled steel
Capacity	8* SC SX
Installation	Wall



## Model 6EUTB

Size	140*90*30mm
Material	ABS
Capacity	4* SC SX
Installation	Wall



## Model RS-48STB

Size	170*135*45mm
Material	ABS + PC (UL-V0)
Capacity	8 SC APC Simplex
IP Rating	55

## OTHER MODELS



2EUTB



5EUTB

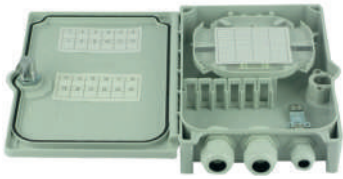
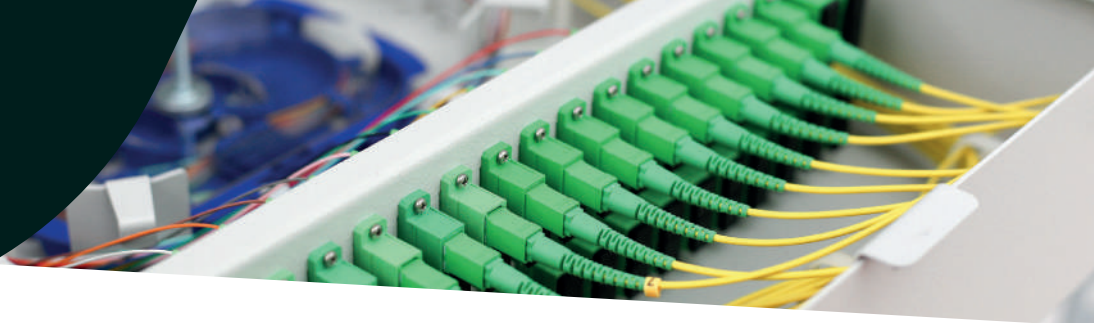


EUTB



14EUTB

# OUTDOOR DISTRIBUTION BOXES



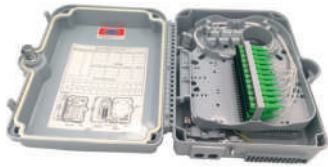
## Model 2STB

Size	258.5*186*61mm
Material	ABS/PC (UV Resistant)
Capacity	12* SC SX
IP Rating	IP65



## Model 15STB

Size	225*200*65mm
Material	ABS/PC (UV Resistant)
Capacity	12* SC SX
IP Rating	IP65



## Model 12STB

Size	225*302*71mm
Material	ABS/PC (UV Resistant)
Capacity	24* SC SX
IP Rating	IP65



## Model 17STB

Size	420*310*138mm
Material	ABS/PC (UV Resistant)
Capacity	4* SC SX
IP Rating	IP65



## Model 14STB

Size	310*235*100mm
Material	ABS/PC (UV Resistant)
Capacity	16* SC SX
IP Rating	IP65



## Model RS-42STB

Size	292*218*83mm
Material	PC + ABS
Capacity	6 SC APC Simplex
IP Rating	65

## OTHER MODELS



3STB



10STB

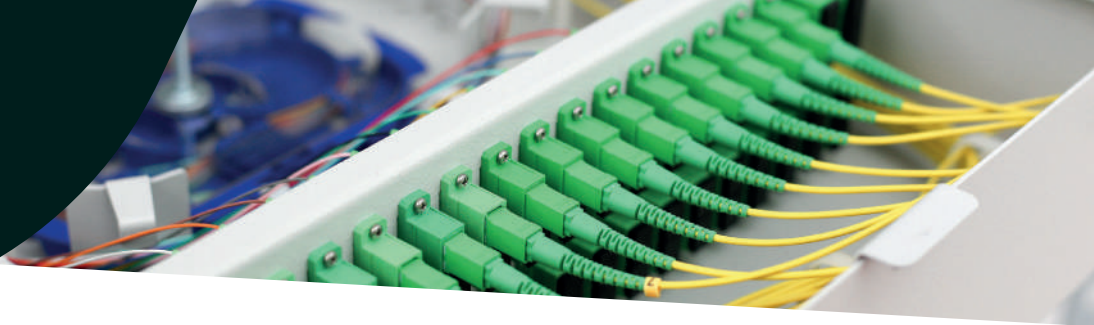


16STB



18STB

# OUTDOOR DISTRIBUTION BOXES



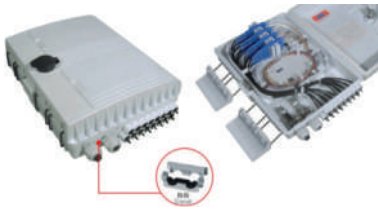
## Model 20STB

Size	266.5*239*229.5mm
Material	ABS/PC (UV Resistant)
Capacity	12* SC SX
IP Rating	IP65



## Model MMI

Size	274*175*82mm
Material	ABS/PC (UV Resistant)
Capacity	16* SC SX
IP Rating	IP65



## Model 23STB

Size	293*219*84mm
Material	ABS/PC (UV Resistant)
Capacity	32* SC SX
IP Rating	IP65



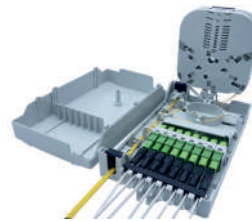
## Model MMJ

Size	330*210*87mm
Material	ABS/PC (UV Resistant)
Capacity	16* SC SX



## Model 24STB

Size	225*302*71mm
Material	ABS/PC (UV Resistant)
Capacity	24* SC SX
IP Rating	IP65



## Model RS-46STB

Size	226*134*51mm
Material	ABS + PC
Capacity	8 SC APC Simplex
IP Rating	54

## OTHER MODELS



21STB



25STB

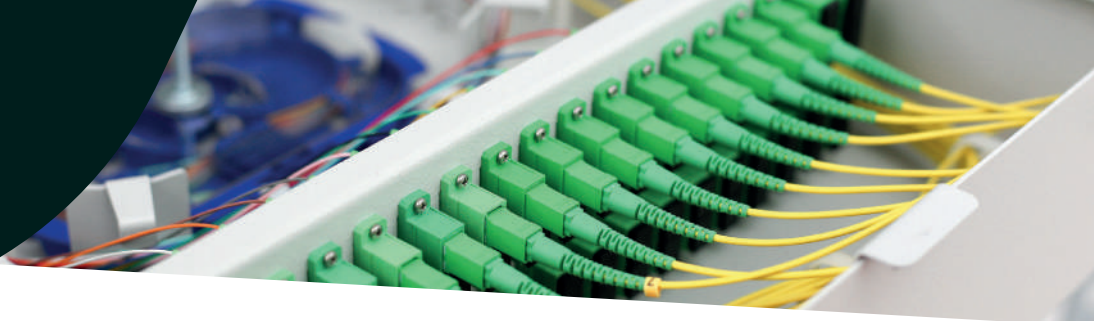


30STB



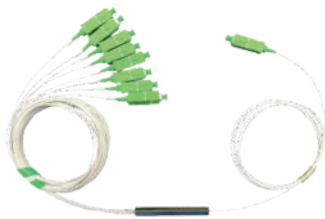
33STB

# SPLITTERS & MECHANICAL SPLICES



## Optical Splitter FBT

Capacity	1*2, 1*4, 1*8... 2*32 and 2*64
Material	Metal
Fiber type	G.652D, G.657 A1, A2 and B3
Durability	500 cycles



## Optical Splitter PLC

Capacity	1*2, 1*4, 1*8... 2*32 y 2*64
Material	Metal
Fiber type	G.652D, G.657 A1, A2 and B3
Durability	500 cycles



## Mechanical Splice

Code	RSMECHSP
Insertion Loss	≤0.2dB
Fiber type	G.652D, G.657 A1, A2 and B3
Cable diameter	250um



## Mechanical Splice M3

Code	RSMECHSPM3
Insertion Loss	≤0.2dB
Fiber type	G.652D, G.657 A1, A2 and B3
Cable diameter	250um and 900um

## OTHER MODELS



ABS



RSMECHSP1



RSMECHSP01

# DOMES ENCLOSURES



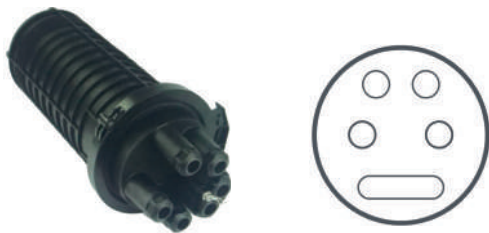
## Model MMZ

Size	478*260mm
Material	Modified polymer plastic
Capacity	432 Fibers
IP Rating	IP68



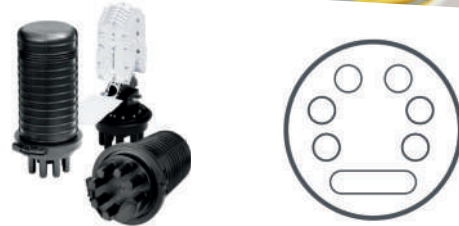
## Model Nap MMY

Size	380*245*130mm
Material	Modified polymer plastic
Capacity	96 Fibers
IP Rating	IP68



## Model MMS Mech. 2

Size	435*230mm
Material	Modified polymer plastic
Capacity	144 Fibers
IP Rating	IP68



## Model MMP

Size	478*260mm
Material	Modified polymer plastic
Capacity	240 Fibers
IP Rating	IP68



## Model MMO

Size	300*188mm
Material	ABS/PC
Capacity	48 Fibers
IP Rating	IP68



## Model MMA

Size	378*255*116mm
Material	Modified PP + Glass fiber (UV
Capacity	24 Fibers
IP Rating	68

## OTHER MODELS



MMX



MMV



MMS



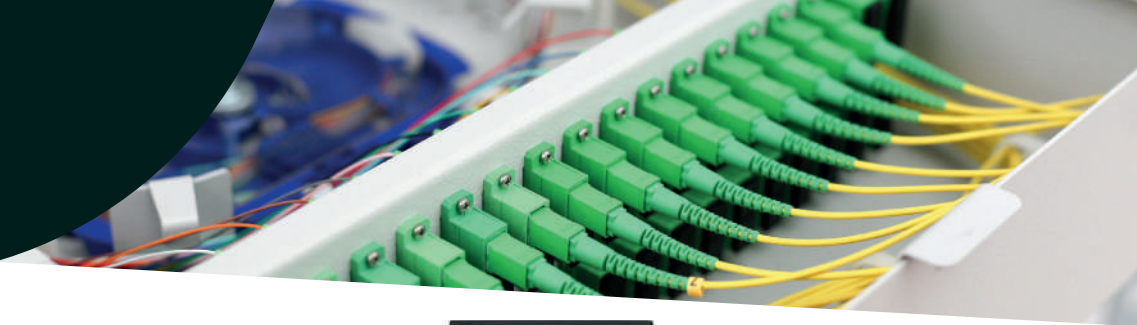
MMN



MMG



# INLINE ENCLOSURES



## Model IMZ

Size	432*186*100mm
Material	Modified polymer plastic
Capacity	96 Fibers
IP Rating	IP68



## Model IMY

Size	533*209*104mm
Material	Modified polymer plastic
Capacity	96 Fibers
IP Rating	IP68



## Model IMV

Size	465*230*125mm
Material	ABS/PC (UV Resistant)
Capacity	96 Fibers
IP Rating	IP68



## Model IMS

Size	668*160*95mm
Material	Modified polymer plastic
Capacity	16 Fibers
IP Rating	IP68



## Model IMO

Size	555*217*150mm
Material	Modified polymer plastic
Capacity	144 Fibers
IP Rating	IP68

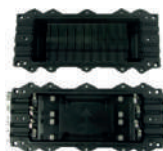
## OTHER MODELS



IMX



IMU



IMT



IMN



MML

# DROP WITH CONNECTOR



## CTO 27STB

Size	432*186*100mm
Material	ABS/PC (UV Resistant)
Drop out ports	16
Capacity	96 Fibers
Comptibility	Huawei SC APC connector
IP Rating	IP65



## CTO 32STB

Size	208*240*117mm
Material	ABS/PC (UV Resistant)
Drop out ports	16
Capacity	16 Fibers
Comptibility	Huawei SC APC connector
IP Rating	IP65



## Model RS-43STB

Size	170*135*45mm
Material	ABS + PC (UL-V0)
Drop out ports	8
Capacity	24 Fibers
Comptibility	Huawei SC APC connector
IP Rating	65



## CTO 31STB

Size	370*265*16.5mm
Material	Modified polymer plastic
Drop out ports	16
Capacity	144 Fibers
Comptibility	Huawei SC APC connector
IP Rating	IP66



## CTO 35STB

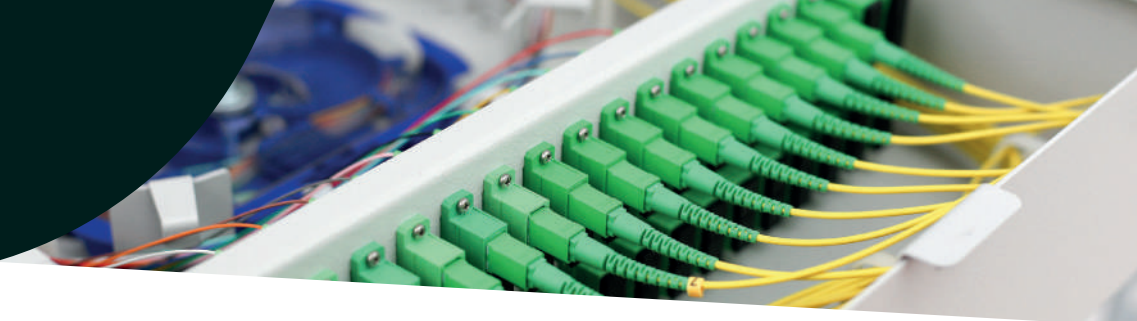
Size	250*80*70mm
Material	ABS/PC (UV Resistant)
Drop out ports	8
Capacity	96 Fibers
Comptibility	Huawei & Corning
IP Rating	IP65



## CTO IMHOME

Size	365*137*90mm
Material	ABS/PC (UV Resistant)
Drop out ports	8
Capacity	96 Fibers
Comptibility	Huawei & Corning
IP Rating	IP65

# DROP WITH CONNECTOR



## Drop cable with Corning connector

Connector type	SC APC
Insertion loss	$\leq 0.2\text{dB}$
Durability	50 connections
IP Rating	IP68
Cable type	Round / Flat
Cable diameter	2mm ~ 7mm
Length	50m, 100m, 150m, 200m, 250m, 300m
Working temperature	-40° ~ 75°C



## Drop cable with Corning compatible connector

Connector type	SC APC
Insertion loss	$\leq 0.2\text{dB}$
Durability	50 connections
IP Rating	IP68
Cable type	Round / Flat
Cable diameter	2mm ~ 7mm
Length	50m, 100m, 150m, 200m, 250m, 300m
Working temperature	-40° ~ 75°C



## Drop cable with Huawei connector

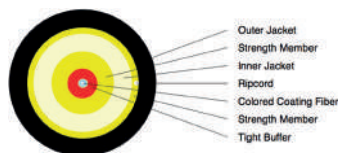
Connector type	SC APC
Insertion loss	$\leq 0.2\text{dB}$
Durability	50 connections
IP Rating	IP68
Cable type	Round / Flat
Cable diameter	2mm ~ 7mm
Length	50m, 100m, 150m, 200m, 250m, 300m
Working temperature	-40° ~ 75°C

# CABLES



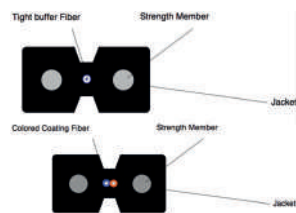
## Round drop cable

Diameter	3mm
Installation	Aéreo exterior y interior
Capacity	1 Fibras
Type of fiber	G.652D, G.657 A1, A2 y B3



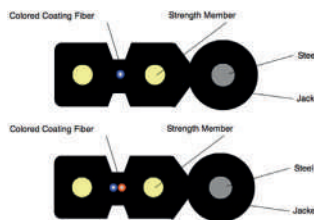
## Round drop cable double jacket

Diameter	4mm
Installation	Aerial, outdoor and indoor
Capacity	1 and 2 fibers
Type of fiber	G.652D, G.657 A1, A2 y B3



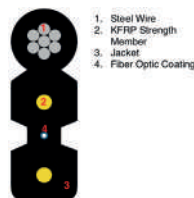
## Flat drop cable

Diameter	3*2mm
Installation	Aerial, outdoor and indoor
Capacity	1 and 2 fibers
Type of fiber	G.652D, G.657 A1, A2 y B3



## Flat drop cable with member

Diameter	5.5*2.1mm
Installation	Aerial, outdoor and indoor
Capacity	1 and 2 fibers
Type of fiber	G.652D, G.657 A1, A2 y B3



## Drop cable model MX

Diameter	5.2*2.1mm
Installation	Aerial, outdoor and indoor
Capacity	1, 2, 3 y 4 fibers
Type of fiber	G.652D, G.657 A1, A2 y B3

# OTHER MODELS



## Round drop cable 2 fibers

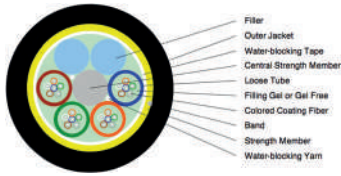
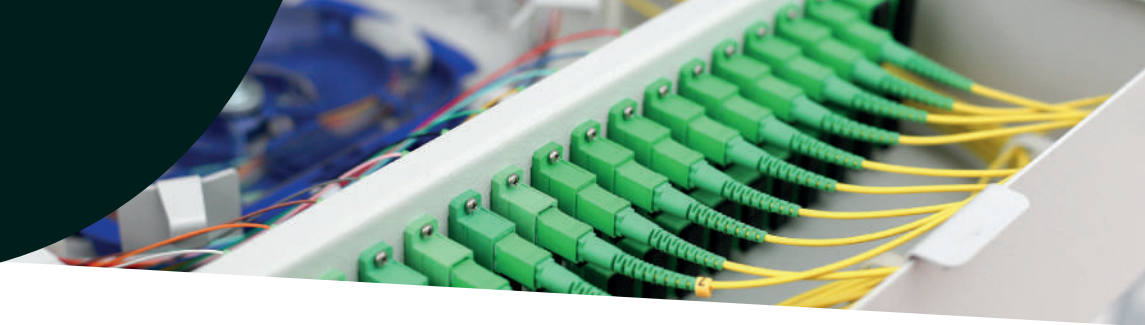


## Invisible drop



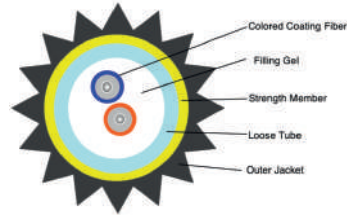
## Flat drop cable

# CABLES



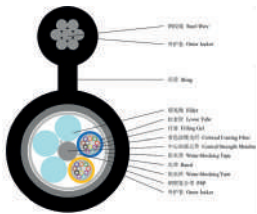
## ADSS single jacket

Span (Meters)	80, 120, 150, 200, 300 up to 400
Installation	Aerial, outdoor
Fiber capacity	12, 24, 36, 48 up to 144
Type of fiber	G.652D, G.655C, G.657A1



## Air blown fiber

Diameter	3 ~ 8mm
Installation	Duct outdoor
Fiber capacity	12, 24, 36, 48 up to 144
Type of fiber	G.652D, G.657 A1, A2 & B3



## Armoured figure 8

Span (Meters)	80, 120, 150, 200, 300 up to 400
Installation	Aerial, outdoor
Fiber capacity	12, 24, 36, 48 up to 96
Type of fiber	G.652D, G.655C, G.657A1



## Clamp Drop redondo

Material	ABS/PC + Galvanised steel
Resistance	100kg
Cable diameter	3 ~ 7mm
Cable type	Drop round & flat

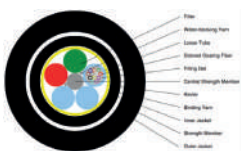


1. Filter
2. Loose tube
3. Colored Coating
4. Central Member
5. Water-blocking Yarn
6. PSP
7. Band
8. PSP
9. Outer Jacket
10. Ripcord

## Aerial armoured

Span (Meters)	80, 120, 150
Installation	Aerial, outdoor
Fiber capacity	12, 24, 36, 48 up to 144
Type of fiber	G.652D, G.655C, G.657A1

# OTHER MODELS



ADSS double jacket

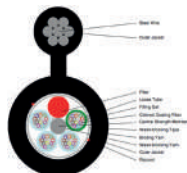
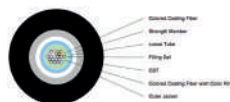


Figure 8



Micro-cable

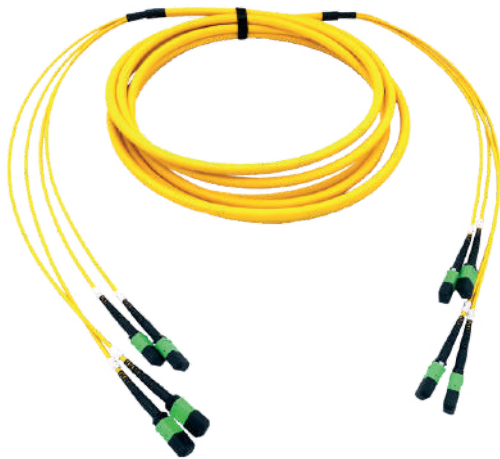
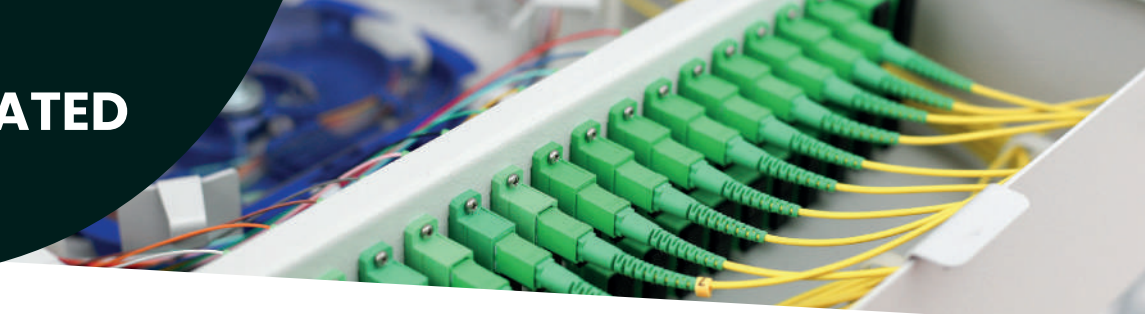


Clamp for flat drop



Clamp for ADSS

# PRE-TERMINATED CABLES



## MPO/MTP trunk cable

Type of connector	MPO, MTP
Fibers quantity	12, 24, 48, 72, 96, 144
Type of polishing	UPC, APC
Insertion loss	≤0.35dB, ≤0.75dB
Type of fiber	G.652D, G.655, G.657, OM3, OM4
Cable type	Indoor, outdoor dielectric, outdoor with corrugated steel
Trunk cable diameter	6mm ~ 9mm
Jacket color	Yellow, Aqua, Violet
Connection type	A, B & C
Standards	GR-326-CORE, TIA/EIA, IEC 60332-3, IEC 61300-2-2, IEC 61300-2-1, IEC 61300-2-12, FOCIS (aka TIA-604-5), IEC-61754-7, TIA-568-C, CENELEC EN50377-15-1, IEC 61300-2-4 & IEC 61300-2-5, REACH, RoHS & SvHC

## MPO/MTP trunk cable to standard connectors



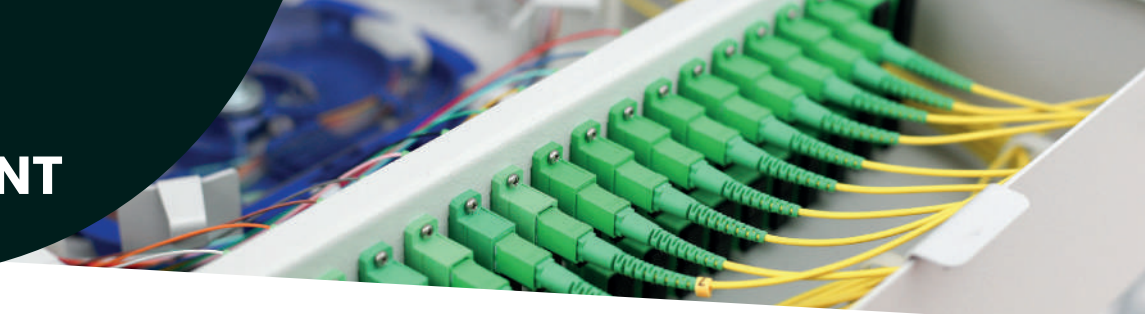
Type of connector	MPO, MTP ~ FC, LC, SC, ST, E2000
Fibers quantity	12, 24, 48, 72, 96, 144
Type of polishing	UPC, APC
Insertion loss	≤0.2dB, ≤0.35dB, ≤0.75dB
Type of fiber	G.652D, G.655, G.657, OM3, OM4
Cable type	Indoor, outdoor dielectric, outdoor with corrugated steel
Trunk cable diameter	6mm ~ 9mm
Jacket color	Yellow, Aqua, Violet
Standards	GR-326-CORE, TIA/EIA, IEC 60332-3, IEC 61300-2-2, IEC 61300-2-1, IEC 61300-2-12, FOCIS (aka TIA-604-5), IEC-61754-7, TIA-568-C, CENELEC EN50377-15-1, IEC 61300-2-4 & IEC 61300-2-5, REACH, RoHS & SvHC

## Multifiber cable



Type of connector	FC, LC, SC, ST, E2000
Fibers quantity	12, 24, 48, 72, 96, 144
Type of polishing	UPC, APC
Insertion loss	≤0.2dB
Type of fiber	G.652D, G.655, G.657, OM3, OM4
Cable type	Indoor, outdoor dielectric, outdoor with corrugated steel
Multi-fiber cable diameter	6mm ~ 9mm
Jacket color	Yellow, Aqua, Violet
Standards	GR-326-CORE, TIA/EIA, IEC 60332-3, IEC 61300-2-2, IEC 61300-2-1, IEC 61300-2-12, FOCIS (aka TIA-604-5), IEC-61754-7, TIA-568-C, CENELEC EN50377-15-1, IEC 61300-2-4 & IEC 61300-2-5, REACH, RoHS & SvHC

# SPLICE & MEASUREMENT



## FTTx splice machine with 6 motors



Model	RS-SM1995
Alignment method	Precise core alignment
Quantity of motors	6
Applicable fibers	Any common optical fibers, rubber-insulated fibers and jumpers that meet requirements of ITU-TG.651-653, ITU-TG.655 and ITU-TG.657.
Average splice loss	0.02dB (SMF), 0.01dB (MMF), 0.04dB (DSF) & 0.04dB (NZ-DSF)
Splicing time (typical)	7s (Fast mode)
Heating time (typical)	Less than 18s
Dimensions	120mm(W) x 130mm(H) x 154mm(D) (without rubber anti-vibration pad)

## PON Power Meter

Model RS-PONMETERM1

PON Termination Tester is Romatecsans newly designed fiber optic tester, it aims at PON network installation, PON network maintenance. It can show 7 states of ONT and OLT. It can find problems of PON network easily

Insertion loss	≤1.5dB
Calibration wave length (Power meter)	1310/1490/1550/1625
Accessories	VFL, Light source
Dimensions (mm)	192*102*50



## High precision cleaver

Model	RSFSMK1
Durability	36000 cleaves

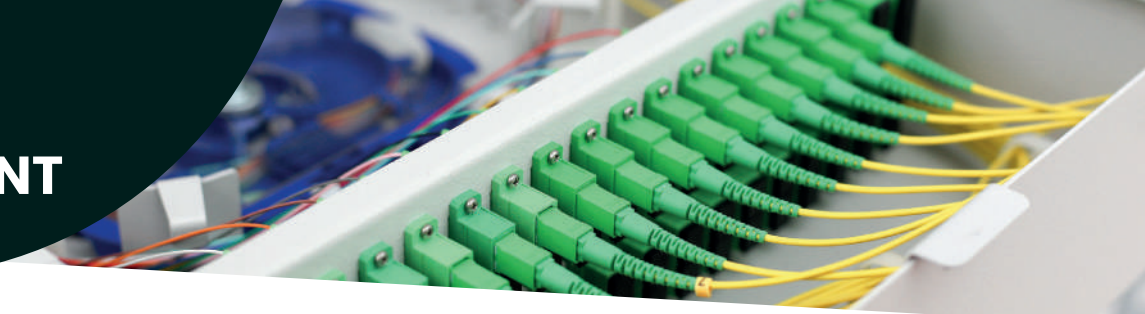
## OTDR

Model	RS-OTDRE
Dynamic range (dB)	23/21 (850/1300nm) 32/30, 38/36 (1310/1550nm) 32/30/30 (1310/1490/1550nm) 34, 36 (1625nm)

## Power meter

Model	RSPOWERME-1	RSPOWERME-2
Calibration	800 ~ 1700nm	
Detector type	InGaAs	
Measurement range (dBm)	-70+10	-50+26

# SPLICE & MEASUREMENT



## Fiber optic OTDR with iOLM



Model	RS-A1500S
Dimensions (mm)	253* 168* 73.6
Weight (kg)	1.5 (including battery)
Display	7 inches TFT-LCD with LED backlight (touch screen function is optional)
Interface	1*RJ45, 3*USB port (USB 2.0, Type A USB*2, Type B USB*1)
Power supply	10V(dc), 100V(ac) to 240V(ac), 50-60Hz
Battery	7.4V(dc)/4.4Ah lithium battery (with air traffic certification) Operating time: 12 hours, Telcordia GR-196-CORE Charging time: <4 hours (power off)
Power saving	Backlight off: Disable/1 to 99 minutes Auto shutdown: Disable/1 to 99 minutes
Data storage	Internal memory: 4GB (about 40,000 groups of curves)

## Portable OTDR

Model	RS-OTDRM3
Measurement range (dBm)	32/30dB
Wave length (nm)	1310/1550
Screen	3.5 inches LCD touch screen
Light source	LD
Connector type	FC/UPC
Measurements times	15s, 30s, 1min, 2min, 3min
Dead zone	10m
VFL	650nm, ≥-3dB, 3km
Dimension / weight	220*106*60mm / 0.88kg



## VFL

Model	RSFSMK1
Laser distance	1km, 5km, 10km, 20km, 40km,

## FTtx splice machine

Model	RSFSMK1
Alignment method	Precise core alignmer
Motors quantity	4
Dimensions (mm)	120(W)*130(H)*154(D)

## Microscope

Model	RS-MIC400X
Light source	LED white, 100,000 hours
Batteries	2* AAA
Dimensions (mm)	190*45



# CLEANING & TOOLS



## Cleaning kit M1

Model RS-1CKT

### Parts

- 1x FBT Fiber Optic Cleaning Cube
- 120x wipes
- 1x 2.5mm One-Click Cleaner SC/FC/ST
- 1x 1.25mm One-Click Cleaner LC/MU
- 1x Aqua Fiber Optic Cleaner (60ml)
- 100x Lint-Free Cleaning Wipes
- 1x Canned Air - Filtered (120ml/4.2oz)
- 10x 99.7% IPA Cleaning Wipes (Pre-Moistened)
- 1x 250ml Twist-Lock Automatic Alcohol Dispensing Bottle
- 1x Portable Carrying bag (230 x 160 x 150mm)



## Measurement kit M4

Model RS-4TK

### Parts

- 1x Carrying Bag of whole kits
- 1x Optical Power Meter
- 1x SC transfer connector for power meter
- 1x Protected Bag for Locator
- 1x 1mw Laser pointer Visual Fault Locator 5km
- 1x Fiber Cleaver FC-6S
- 1x Bag for cleaver
- 1x CFS-2 Fiber Optic Cable Stripper
- 1x FTTH Drop Cable Stripper
- 1x Alcohol bottle
- 1x Fixed length rail
- 3x Small Allen Wrench



## Cleaning kit M2

Model RS-2CKT

### Parts

- 1x Fiber Connector Cleaner RS-105
- 1x Reel of Replacement for RS-105 Cleaner
- 1x 200X Mini Fiber Microscope 200X (SC & LC)
- 1x 2.5mm SC/FC/ST Ergonomic One-click Cleaner
- 1x LC/MU Ergonomic One-click Cleaner
- 1x KimWipes 280 pcs/box
- 1x 250ml Bottle of Alcohol with locked
- 10x IPA Fiber Cleaning Wipes (Pre-Moistened)
- 1x Fiber Cleaning Wipes 7.5x7.5mm, 50/pkg
- 1x Pocket Visual Fault Locator VFL (Optional)
- 1x Carrying Tool Case (385 x 275 x 110mm)



## Tool kit M1

Model RS-1TK

### Parts

- 1x Fiber optic stripper
- 1x KEVLAR Scissor
- 1x Fiber Jacket Stripper
- 1x Rotary Cable Stripper
- 1x 45-163 Blue buffer tube stripper
- 1x Optical Fiber Precision Cleaver
- 1x Fiber Continuity Tester
- 1x Longitudinal Fiber Cable Slitter
- 1x Round Cable Slitter
- 1x 8" Steel Wire Rope Cutter
- 1x 6" Needle Node Pliers 135nm
- 1x 6" Side Cut Pliers 130nm
- 1x 4 Bits Screwdriver
- 1x FBT Fiber Optic Cleaning Cube, 100wipes
- 5x 99.7% IPA Cleaning Wipes (Pre-Moistened)
- 1x 100ml Alcohol Dispensing Bottle
- 100x 60mm Fusion Splice Protection Sleeves, 100 pieces/bag
- 1x 2M Tape Measure
- 1x Precision Steel tweezers
- 1x Fiber Optic Disposal Unit
- 1x Utility Knife
- 1x Black Marker
- 1x Deluxe Carrying Tool Case



## Cassette cleaner

Model RSCCN1  
Durability 500 connections



## One click pen

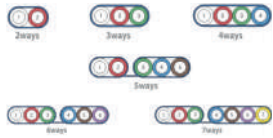
Model RSPC25 RSPC125  
Connector FC, SC, ST LC, E2000  
Durability 800 connections



## Drop cable stripper

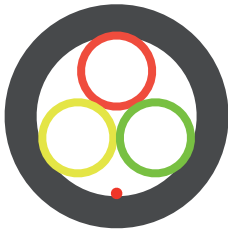
Model RSDROSPPP  
Cable diameter 2 ~ 3mm

# MICRO DUCTS



## Flat

Ways	2, 3, 4, 2+3, 3+3 & 3+4
Material	HDPE
Diameters	Under request
Thickness	Under request



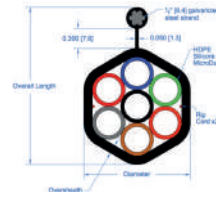
## Round

Ways	1, 3, 4 & 7
Material	HDPE
Diameters	Under request
Thickness	Under request



## Hexagonal

Ways	7
Material	HDPE
Diameters	Under request
Thickness	Under request



## Hexagonal aerial with member

Ways	4 & 7
Material	HDPE
Diameters	Under request
Thickness	Under request



## Connector

Material	PC
Diameters	Under request

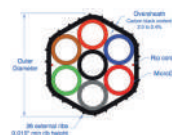
## OTHER MODELS



Round



Square



Hexagonal aerial



Connector

# CONTACT



## Hong Kong

**Email** sales@romatecsans.com  
**Phone nr.** +852 3678 6747  
**Address** 5/Floor, Nathan Centre,  
580G Nathan Road,  
Kowloon, Hong Kong



## Santiago, Chile

**Email** ventas@romatecsans.com  
**Phone nr.** 56 9 7990 4622  
**Address** Carmen Farina 6758, Santiago,  
Chile



## Dongguan, China

**Email** pmanager@romatecsans.com  
**Phone nr.** +86 152 4116 4343  
**Address** Nr. 3, 170 meters, Binchong Village,  
Daojiao Town, Dongguan,  
Guangdong Province, China



## Barcelona, Spain

**Email** sales@romatecsans.com  
**Phone nr.** +34 644 601 904  
**Address** Ronda Mitre 3, Barcelona, Spain

